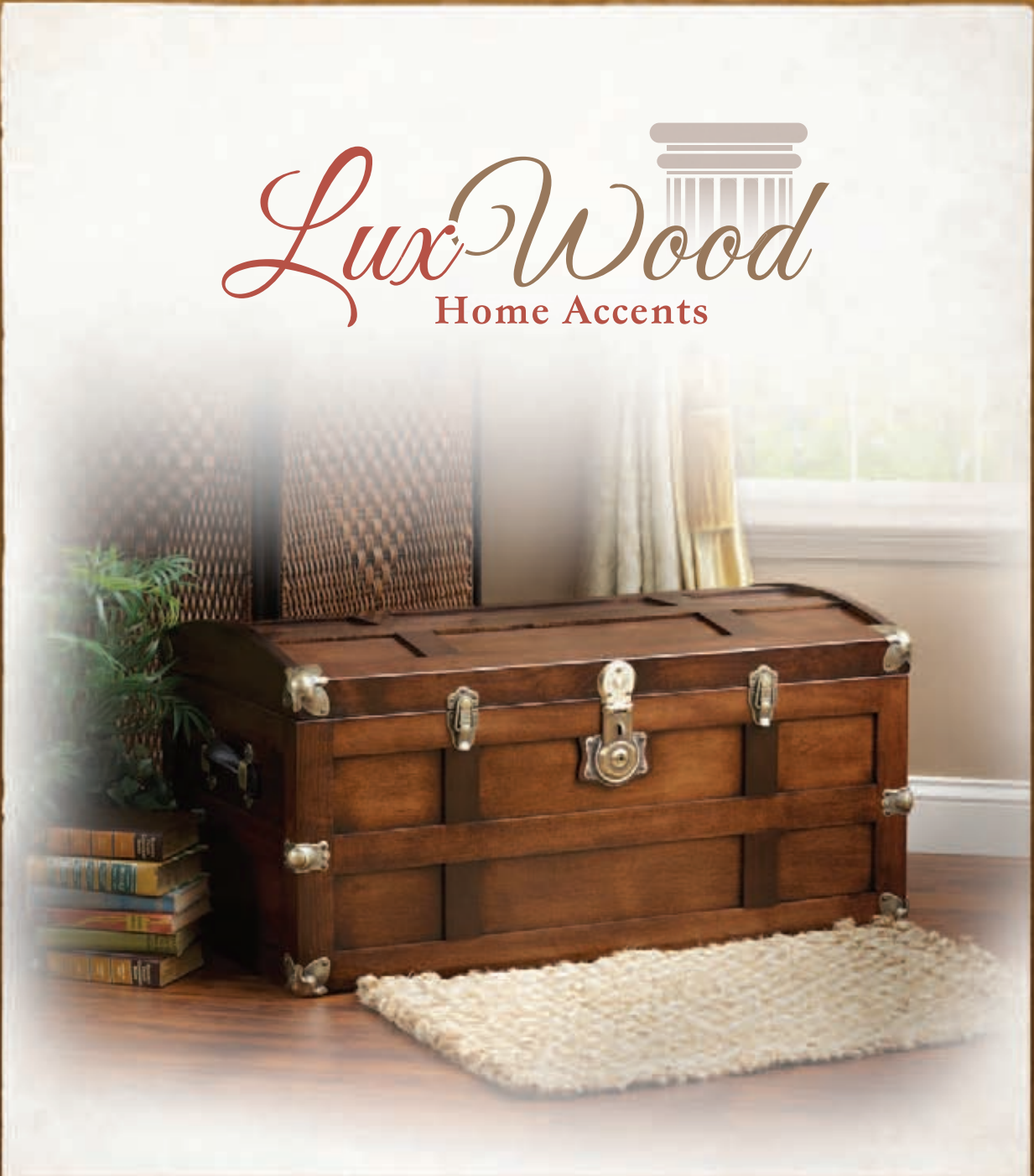


*LuxWood*  
Home Accents



CHEST CATALOG

# WELCOME TO LUXWOOD HOME ACCENTS

Luxwood Home Accents are manufactured in eastern Lancaster County, in the heart of Amish country. Our family owned business started in 1995, and we've continued to expand our line of heirloom quality furniture. We are committed to making furniture that you and your family will enjoy for years to come.

North American Hardwoods offer many rich details in the wood grain. Each production has its own individual grain which carries a beauty that goes deeper than the surface. This beauty is natural; no synthetics, no laminates, no engineered surfaces. Each design is enduring and the quality construction invites you to enjoy using this furniture year after year. When we finish our products, we preserve the distinctive character of the wood. Our solid hardwood furniture is sure to please you today and will be an heirloom to those who follow you. We hope you enjoy browsing through our catalog!







# *Table of Contents* TABLE OF CONTENTS

Gallery of Styles . . . . .	4	Savannah Series . . . . .	24
Basic Cedar Series . . . . .	6	Yorktown Series . . . . .	26
Franklin Series . . . . .	7	Mission Series . . . . .	27
Charleston Series . . . . .	8	Mayflower Series . . . . .	28
Summerfield Series . . . . .	10	Shaker 3-Panel . . . . .	30
Harmony Series . . . . .	12	Shaker 2-Panel . . . . .	32
Steamer Trunk Series . . . . .	14	Painted Toy Chests . . . . .	33
Plymouth Trunk Series . . . . .	16	Toy Chests . . . . .	34
Manchester Series . . . . .	18	Standards & Options . . . . .	36
Springfield Series . . . . .	19	Engravings & Fabrics . . . . .	38
Cambridge Series . . . . .	20	Care & Warranty . . . . .	41
Carriage House Series . . . . .	22	Chest Key . . . . .	42

# GALLERY OF STYLES

## FLATTOP DESIGNS

### ECONOMICAL

### CLASSIC

### SPECIALITY

### TOY CHESTS



**Basic Cedar Series, Pg. 6**  
*The best in cedar storage*



**Yorktown Series, Pg. 26**  
*Classic Reproduction design*



**Savannah Series, Pg. 24**  
*Deep storage chest*



**Toy Chest, Pg. 34**  
*Basic Toy Chest*



**Franklin Series, Pg. 7**  
*Cedar chest featuring a flat top design*



**Mayflower Series, Pg. 28**  
*Classic Panel design*



**Carriage House Series, Pg. 22**  
*Deep Storage Chest with drawers*



**Engraved Toy Chest, Pg. 34**  
*Basic Toy Chest*



**Charleston Series, Pg. 8**  
*Flat top design*



**Mission Series, Pg. 27**  
*Mission style design*



**Shaker Series, Pg. 30**  
*Simple panel design*



**Painted Toy Chest, Pg. 33**  
*Painted maple toy chest*



# reminiscent of the old world

The hope chest is a long standing tradition that has been passed down from generation to generation. Dating as far back as the 15th century, cedar chests were used to collect items such as clothing, towels, bed linens, household linens, quilts and occasionally dish wares, by unmarried young women in anticipation of married life. The hope chest legacy provides a link to the past, present

and future, all within its depths.

LuxWood Home Accents celebrates the value of the hope chest and is honored to bring you many different styles of chests in a variety of woods and finishes. Take a moment to explore our catalog! We believe you will find one that you will come to treasure for the years to come!

## WATERFALL DESIGN



**Summerfield Series, Pg. 10**  
*Beautiful Waterfall design*



**Harmony Series, Pg. 12**  
*Waterfall design - Oak & Cherry*



**Harmony Series, Pg. 12**  
*Waterfall design - Maple*

## SEAT RAIL DESIGN



**Springfield Series, Pg. 19**  
*Seat Rail design*



**Manchester Series, Pg. 18**  
*Seat rail design with faux front*



**Cambridge Series, Pg. 20**  
*Seat rail design*

## TRUNK DESIGN



**Steamer Trunk Series, Pg. 14**  
*Rounded Top trunk design*



**Plymouth Trunk Series, Pg. 16**  
*Flat Top trunk design*



**Tall Plymouth Trunk, Pg. 17**  
*Tall flat top trunk design*

# BASIC CEDAR SERIES

The Basic Cedar design offers you the best in cedar storage. Using solid aromatic cedar with a clear finish, your chest will be unique with beautiful color variations. Available in four sizes.



**Mini Basic, Cedar (#10-11)**  
24"L x 13½"W x 14½"H



**Small Basic, Cedar (#20-11)**  
30"L x 15½"W x 16½"H



**QUICK  
SHIP**

**Medium Basic, Cedar (#30-11)**  
36"L x 17½"W x 18½"H



**Large Basic, Cedar (#40-11)**  
42"L x 18½"W x 19½"H

*For more details on Quick Ship, see page 42*

## WHAT CUSTOMERS ARE SAYING

"The craftsmanship and skill that went into making this chest is just the beginning. This chest is gorgeous and arrived right when the crafter said it would, I am sure this chest will be in our family for generations to come." *Raymond*





The Franklin Series features a flat top design. Using solid aromatic cedar with a clear finish, your chest will be unique with beautiful color variations. Comes standard with a lock. Available in three sizes.

# FRANKLIN SERIES



**Small Franklin, Cedar (#33-11)**  
36"L x 17½"W x 17½"H



**Medium Franklin, Cedar (#44-11)**  
42"L x 18½"W x 19"H



**Large Franklin, Cedar (#55-11)**  
46"L x 20"W x 21½"H

“It’s a dangerous business going out your door. You step onto the road, and if you don’t keep your feet, there’s no knowing where you might be swept off to.” J.R.R. Tolkien





# CHARLESTON SERIES

## **Large Charleston, Cherry (#55-33)**

*Shown with dovetails joints and in OCS 111 Boston Stain.  
46"L x 20"W x 20½"H*



The Charleston Series features a flat top design with lots of storage space and a new foot style. Available in Oak and Cherry. Comes standard with cedar bottom, a lock and spring lid support.





**Medium Charleston, Cherry (#44-33)**

*Shown in OCS 228 Rich Tobacco*

42"L x 18½"W x 19"H



**Medium Charleston, Oak (#44-22)**

*Shown with "Rest Some" design in OCS 104 Seely.*

42"L x 18½"W x 19"H



**Large Charleston, Oak (#55-22)**

*Shown with Dovetail Joints in Tavern Stain.*

46"L x 20"W x 20½"H

## WHAT CUSTOMERS ARE SAYING

"I cannot express how impressed I was by the quality of workmanship on the Harmony Chest. Gorgeous, beautiful, exquisite - none of those words describe how well made the chest is. The etching on the front of it is done so perfectly. Thank-you - this will certainly be an heirloom passed down from generation to generation." *Teresa*

"Great Quality, nice looking chest, good packing, great service! Buy with confidence. Five star rating from me." *Wallace*



# Summerfield SUMMERFIELD SERIES



**Large Summerfield, Cedar (#77-11)**  
46"L x 20"W x 21½"H

This classic design features a gently rounded top and scalloped foot.  
Only available in Cedar. All of the chests in this series come  
standard with a lock. Available in five sizes.

*For more details on Quick Ship, see page 42*





**Petite Summerfield, Cedar (#27-11)**  
29"L x 16½"W x 17"H



**Small Summerfield, Cedar (#37-11)**  
*Shown with dovetail joints.*  
36"L x 17½"W x 18"H



**Medium Summerfield, Cedar (#72-11)**  
42"L x 18½"W x 19½"H



**Jumbo Summerfield, Cedar (#97-11)**  
46"L x 24½"W x 25½"H

"We live in a wonderful world that is full of beauty, charm and adventure. There is no end to the adventures we can have if only we seek them with our eyes open." Jawaharal Nehru



# HARMONY SERIES

This classic design features a rounded top and scalloped foot. The Harmony is available in Oak, Cherry & Maple. All of the chests in this series come standard with cedar bottom, lock and spring lid support. Available in four sizes.

## **Large Harmony, Cherry (#77-33)**

*Shown in OCS 106 Acres.*

46"L x 20"W x 21½"H



## **Small Harmony, Cherry (#37-33)**

*Shown in OCS 229 Bing Cherry.*

36"L x 17½"W x 18"H



## **Small Harmony, Oak (#37-22)**

*Shown in OCS 101 S-2 Stain.*

36"L x 17½"W x 18"H





**Medium Harmony, Maple (#72-44)**

*Shown in painted white.*

42"L x 18½"W x 19½"H



**Medium Harmony, Cherry (#72-33)**

*Shown with optional Oval Rose design in OCS 106 Acres Cherry.*

42"L x 18½"W x 19½"H



**Large Harmony, Cherry (#77-33)**

*Shown with optional Bless Our Home - Grapes design in OCS 229 Bing Cherry.*

46"L x 20"W x 21½"H



**Large Harmony, Oak (#77-22)**

*Shown in OCS 104 Seely Stain.*

46"L x 20"W x 21½"H



**Jumbo Harmony, Cherry (#97-33)**

*Shown in OCS 106 Acres Cherry.*

46"L x 24½"W x 25½"H



**Jumbo Harmony, Oak (#97-22)**

*Shown in OCS 116 Harvest*

46"L x 24½"W x 25½"H

# STEAMER TRUNK SERIES



**QUICK  
SHIP**

**Steamer Trunk, Maple (#100-44)**

*Shown in OCS 226 Coffee with Antique  
Brass hardware.*

36"L x 20"W x 18"H

With an air of nostalgia and an antique touch we are sure this trunk will be a family treasure for generations to come. This trunk features a rounded top, genuine leather handles, lock and cedar sliding tray. Available in Oak, Maple and Hickory.

*For more details on Quick Ship, see page 42*





*Steamer Trunk, Oak (#100-22)*

*Shown in OCS 116 Harvest with Antique Brass hardware.  
36"L x 20"W x 18"H*



**Steamer Trunk, Maple (#100-44)**

*Shown in \*Legacy Black finish with Antique Brass hardware.  
36"L x 20"W x 18"H*



*Steamer Trunk, Maple (#100-44)*

*Shown in OCS 104 Seely with \*Old World Distressing  
and Antique Brass hardware.  
36"L x 20"W x 18"H*



*Steamer Trunk, Maple (#100-44)*

*Shown in \*Pearl Rubthrough w/ parchment glaze and  
\*Old World Distressing with Bronze hardware.  
36"L x 20"W x 18"H*



*Steamer Trunk, Hickory (#100-88)*

*Shown in natural finish and Bronze hardware.  
36"L x 20"W x 18"H*



### **Trunk Hardware**

Hardware available in Polished Nickel, Polished Brass, Antique Brass and \*Bronze (not pictured). \*Some items may incur extra charges.

*\*This finish incurs an upcharge.*



# Plymouth Trunk PLYMOUTH TRUNK SERIES

**Plymouth Trunk, Oak (#200-44)**

*Shown in New Carrington Stain & \*Old World*

*Distressing with Antique Brass hardware.*

36"L x 20"W x 18"H



The Plymouth Trunk series is very similar to the Steamer Series. This one boasts a flat top, genuine leather handles, lock and cedar sliding tray.

Available in Oak, Maple & Hickory. Also available in a taller size!

*See page 15 for hardware choices.*





**Plymouth Trunk, Oak (#200-22)**

*Shown in New Carrington Stain and \*Old World*

*Distressing with Antique Brass hardware.*

36"L x 20"W x 18"H



**Plymouth Trunk, Maple (#200-44)**

*Shown in \*Legacy Black finish with Antique Brass hardware.*

36"L x 20"W x 18"H



**Plymouth Trunk, Maple (#200-44)**

*Shown in OCS 228 Rich Tobacco with Polished Nickel hardware.*

36"L x 20"W x 18"H



**Plymouth Trunk, Hickory (#200-88)**

*Shown in natural Hickory with Bronze hardware.*

36"L x 20"W x 18"H



**Plymouth Trunk, Oak (#200-22)**

*Shown in painted black with Antique Brass hardware.*

36"L x 20"W x 18"H



**Plymouth Trunk, Maple (#200-44)**

*Shown in OCS 226 Coffee Stain and \*Old World Distressing with Antique Brass hardware.*

36"L x 20"W x 24"H

*\*This finish incurs an upcharge.*

# MANCHESTER SERIES



**Manchester, Cherry (#56-33)**

*Shown with #70 Emboss Linen Seat Cushion.  
46"L x 20"W x 24½"H*

The Manchester Series is perfect for the end of a bed or even as a window seat. This series features an optional padded seat and simulated door and drawer fronts. Comes standard with cedar bottom, lock and spring lid support (*not available on cedar*). Available in Cedar, Oak and Cherry.





**Manchester, Cedar (#56-11)**

*Shown with #66 Molly-Onyx cushion*  
46"L x 20"W x 24½"H



**Manchester, Oak (#56-22)**

*Shown in Tavern Stain with #62 Ferrara-Sunset Seat Cushion*  
46"L x 20"W x 24½"H

## SPRINGFIELD SERIES

With a similar design to the Manchester, this series is only available in Cedar. It is perfect for that seat at the end of a bed or by a window. It is available with an optional padded seat and comes standard a lock.



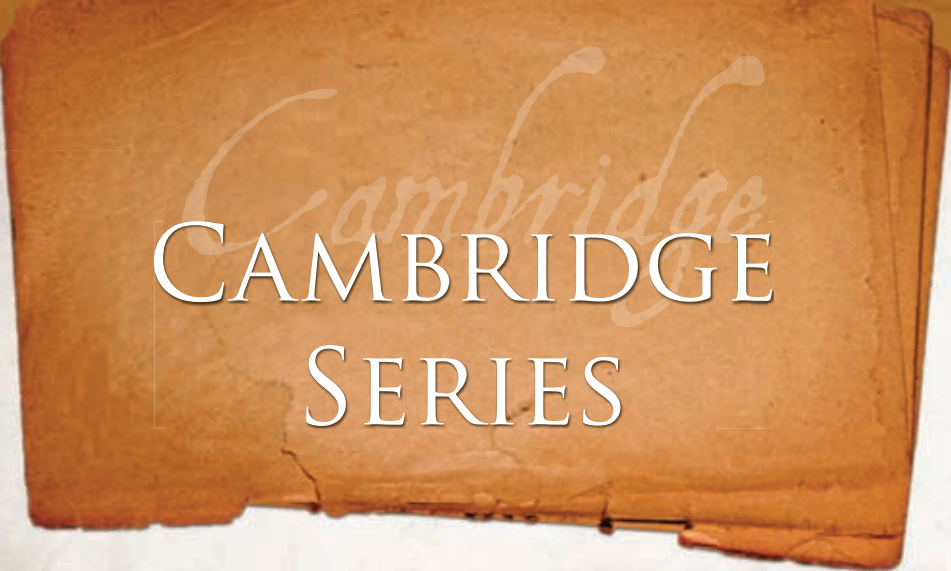
**Medium Springfield, Cedar (#4407-11)**

*Shown with #72 Vault-Truffle Seat Cushion*  
42"L x 18½"W x 22"H



**Large Springfield, Cedar (#5507-11)**

*Shown with #70 Emboss-Linen Seat Cushion*  
46"L x 20"W x 24½"H




# CAMBRIDGE SERIES

## **Cambridge, Cherry (#5507-33)**

*Shown in OCS 106 Acres Cherry Stain and  
#46 Pearl Cushion.*

46"L x 20"W x 24½"H



The Cambridge Series features a seat rail and an optional padded top making it a comfortable seat. *(See page 38 for more fabric options.)* It comes standard with cedar bottom, lock and spring lid support. Available in Oak & Cherry. Available in two sizes.





**Medium Cambridge, Oak (#4407-22)**

*Shown in OCS 112 Provincial Oak with #50 Sage Seat Cushion.  
42"L x 18½"W x 22"H*



**Medium Cambridge, Cherry (#4407-33)**

*Shown in OCS 106 Acres Cherry with #46 Pearl Cushion.  
42"L x 18½"W x 22"H*



**Large Cambridge, Oak (#5507-22)**

*Shown in Golden Oak with #54 Burgundy  
46"L x 20"W x 24½"H*

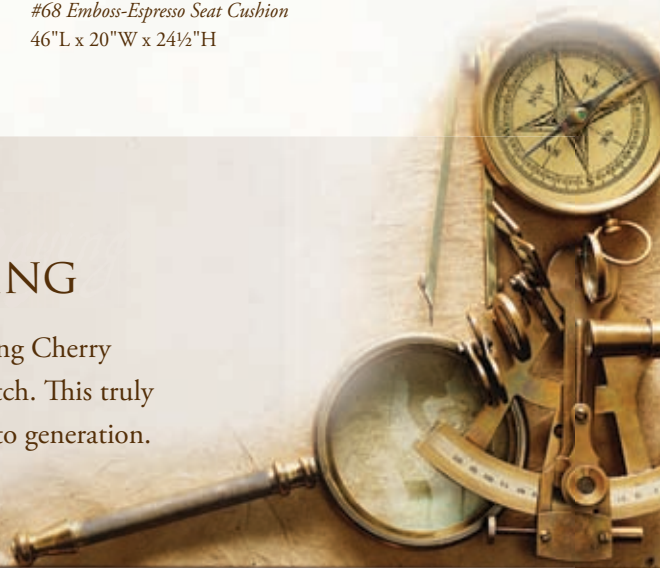


**Large Cambridge, Cherry (#5507-33)**

*Shown in OCS 106 Acres Cherry with  
#68 Emboss-Espresso Seat Cushion  
46"L x 20"W x 24½"H*

## WHAT CUSTOMERS ARE SAYING

"I ordered the Cambridge large seat rail cherry chest in Bing Cherry and it is absolutely beautiful. The craftsmanship is top-notch. This truly is a piece of furniture that will be passed from generation to generation. Thank you!" *Denise*



# CARRIAGE HOUSE SERIES

**Carriage House, Cherry (#702-33)**

*Shown in Autumn Wheat.*

36½"L x 17¾"W x 23½"H



The Carriage House is an excellent storage solution featuring added height and a shorter length. Two dovetailed drawers are an additional valued feature. This series is available with a shaker base or elegant tulip feet. Comes standard with cedar bottom, lock, spring lid support and dovetail joints. Available in Oak, Cherry, Maple, Tiger Maple & Qtr. Sawn White Oak.





**Carriage House, Oak (#702-22)**  
*Shown with Shaker Base and Harvest Oak.*  
 36½"L x 17¾"W x 23½"H



**Carriage House, Maple (#701-44)**  
*Shown with Tulip Feet and in Black Rubthrough  
 w/ OCS 106 Acres Cherry.*  
 36½"L x 17¾"W x 23½"H



**Carriage House, Cherry (#701-33)**  
*Shown with Tulip Feet and in Autumn Wheat Cherry.*  
 36½"L x 17¾"W x 23½"H



**Carriage House, Maple (#701-44)**  
*Shown with tulip feet and a Black Rubthrough finish.*  
 36½"L x 17¾"W x 23½"H

"Literature adds to reality, it does not simply describe it. It enriches the necessary competencies that daily life requires and provides; and in this respect, it irrigates the deserts that our lives have already become." C.S. Lewis



# SAVANNAH SERIES



**Savannah, Maple (#601-44)**

*Painted Pearl White with optional Ps. 62:5 design and tulip feet.*

36½"L x 17¾"W x 23½"H

The Savannah Series is very similar to the Carriage House with the exception of the drawers. It is an excellent storage solution featuring added height and a shorter length. This series is available with a shaker base or elegant tulip feet. Comes standard with cedar bottom, lock, spring lid support and dovetail joints. Available in Oak, Cherry, Maple, Tiger Maple & Qtr. Sawn White Oak.





**Savannah, Oak (#601-22)**

*Shown in Natural Oak with tulip feet*

36½"L x 17¾"W x 23½"H



**Savannah, Cherry (#602-33)**

*Shown in Salem Cherry with shaker base.*

36½"L x 17¾"W x 23½"H



**Savannah, Maple (#602-44)**

*Shown in Black Rubthrough with optional Tiger Maple top stained in OCS 113 Michaels Cherry. Shown with shaker base.*

36½"L x 17¾"W x 23½"H



**Savannah, Maple (#602-44)**

*Painted Pearl White with Nantucket Glaze & optional Love Never Fails design. Shown with shaker base.*

36½"L x 17¾"W x 23½"H



**Savannah, Qtr Sawn White Oak (#602-55)**

*Shown in OCS 113 Michaels Cherry and shaker base.*

36½"L x 17¾"W x 23½"H



**Savannah, Tiger Maple (#602-66)**

*Shown in OCS 113 Michaels Cherry stain and shaker base.*

36½"L x 17¾"W x 23½"H

# YORKTOWN SERIES

**Large Yorktown, Cherry (#5500-33)**

*Shown in OCS 116 Harvest Cherry.*

46½"L x 20½"W x 21"H



The Yorktown Series is a beautiful traditional style chest. It features an ogee bracket foot and beautiful moulding. Available in Oak and Cherry and comes standard with cedar bottom, lock and spring lid support. Available in two sizes.





**Medium Yorktown, Oak (#4400-22)**  
Shown in OCS 101-S2 Stain.  
42½"L x 19"W x 19"H



**Medium Yorktown, Cherry (#4400-33)**  
Shown in OCS 106 Acres Cherry.  
42½"L x 19"W x 19"H



**Large Yorktown, Oak (#5500-22)**  
Shown in OCS 104 Seely.  
46½"L x 20½"W x 21"H

## MISSION SERIES

The Mission Series features mission slats on all four sides. Comes standard with a cedar bottom. Available in Oak and Qtr Sawn White Oak.

**QUICK  
SHIP**



**Mission, Oak (#3718-22)**  
Shown in OCS 116 Harvest Oak.  
42½"L x 19¼"W x 19"H



**Mission, Qtr Sawn White Oak (#3718-55)**  
Shown in OCS 113 Michaels Cherry.  
42½"L x 19¼"W x 19"H

♥ **CUSTOMER FAVORITE!**

For more details on Quick Ship, see page 42

# MAYFLOWER SERIES



**Medium Mayflower, Cherry (#423-33)**

*Shown in OCS 229 Bing Cherry.*

42½"L x 19"W x 21½"H

The Mayflower Series is a classic panel series built using raised panel construction on the front and sides. This series features ogee bracket foot and moulding. Comes standard with cedar bottom, lock and spring lid support. Available in Oak and Cherry. Available in two sizes.





**Medium Mayflower, Oak (#423-22)**

*Shown in OCS 116 Harvest.*

42½"L x 19"W x 21½"H



**Medium Mayflower, Cherry (#423-33)**

*Shown in OCS 229 Bing Cherry.*

42½"L x 19"W x 21½"H



**Large Mayflower, Oak (#523-22)**

*Shown in OCS 112 Provincial Oak.*

46½"L x 20½"W x 22½"H



**Large Mayflower, Cherry (#523-33)**

*Shown in OCS 106 Acres Cherry.*

46½"L x 20½"W x 22½"H



“Twenty years from now you will be more disappointed by the things that you didn’t do than by the ones you did do. So throw off the bowlines. Sail away from the safe harbor. Catch the trade winds in your sails. Explore. Dream. Discover.” Mark Twain



# SHAKER SERIES

## THREE PANELS

**Three Panel Shaker, Cherry (#4219-33)**

*Shown in OCS 106 Acres Cherry.*

42½"L x 19¼"W x 19"H

Shaker Furniture is a style that dates back hundreds of years and is known for its simplicity and quality. The Shaker series carries those qualities with its raised panel construction on all four sides.

Comes standard with a cedar bottom. Available in Oak, Cherry and Maple.





**QUICK  
SHIP**

**Three Panel Shaker, Maple (#4219-44)**  
*Painted with Black Rubthrough and cherry top stained in OCS 106 Acres.*  
 42½"L x 19¼"W x 19"H



**Three Panel Shaker, Maple (#4219-44)**  
*Shown in \*Legacy Black Finish.*  
 42½"L x 19¼"W x 19"H



**Three Panel Shaker, Maple (#4219-44)**  
*Painted Pearl White with parchment glaze. Maple top \*distressed with OCS 104 seely and glaze.*  
 42½"L x 19¼"W x 19"H



**Three Panel Shaker, Cherry (#4219-33)**  
*Shown in OCS 113 Michaels Cherry and \*Old World Distressing.*  
 42½"L x 19¼"W x 19"H



**Three Panel Shaker, Oak (#4219-22)**  
*Shown in OCS 116 Harvest*  
 42½"L x 19¼"W x 19"H

*\*This finish incurs an upcharge.  
 For more details on Quick Ship, see page 42*

"You are never too old to set  
 another goal or to dream a  
 new dream." C. S. Lewis



# SHAKER SERIES

## TWO PANELS

Shaker Furniture is a style that dates back hundreds of years and is known for its simplicity and quality. The Shaker series carries those qualities with its raised panel construction on all four sides. Comes standard with a cedar bottom. Available in Oak, Cherry and Maple.



**Two Panel Shaker, Maple (#3316-44)**

*Shown in \*Legacy Black Finish.*

33"L x 16½"W x 18"H



**Two Panel Shaker, Cherry (#3316-33)**

*Shown in OCS 106 Acres Cherry.*

33"L x 16½"W x 18"H



**Two Panel Shaker, Oak (#3316-22)**

*Shown in OCS 228 Rich Tobacco*

33"L x 16½"W x 18"H



**Two Panel Shaker, Maple (#3316-44)**

*Painted with Black Rubthrough and cherry top stained in OCS 106 Acres.*

33"L x 16½"W x 18"H

*\*This finish incurs an upcharge.*



Our new line of painted Toy Chests come in a variety of colors to choose from. It features pinch-free front panels and counterbalanced lids supports which prevents accidental fall of the chest lid.

Approved by the Consumer Product Safety Commission.

# PAINTED TOY CHESTS



**Painted Toy Chest, Maple (#411-44)**  
36½"L x 17¾"W x 17¾"H



**Black**



**Sunburst**



**Cran-Apple Red**



**Coffee Bean**



**Glacier Blue**



**Pearl White**



**Celery**



**Metropolitan Gray**

# TOY CHESTS



**Toy Chest, Maple (#411-44)**

*Shown with "Toys" engraved on the front. Shown in OCS 104 Seely.*

36½"L x 17¾"W x 17¾"H

Our Toy Chests are made of quality construction to endure generations of use. It features pinch free front panels that won't pinch little fingers. Our toy chests have counterbalanced lids supports which prevent accidental fall of the chest lid, approved by the Consumer Product Safety Commission.





**Engraved Toy Chest, Oak (#421-22)**

*Shown in OCS 116 Harvest.*

42½"L x 18¾"W x 18¾"H



**Plain Toy Chest, Oak (#424-22)**

*Shown with Plain Front and in OCS 112 Provincial Oak.*

42½"L x 18¾"W x 18¾"H



**Toy Chest, Oak (#411-22)**

*Shown in OCS 226 Coffee with "Toys" engraved on the front.*

36½"L x 17¾"W x 17¾"H



**Toy Chest, Maple (#411-44)**

*Shown in OCS 104 Seely with "Toys" engraved on the front.*

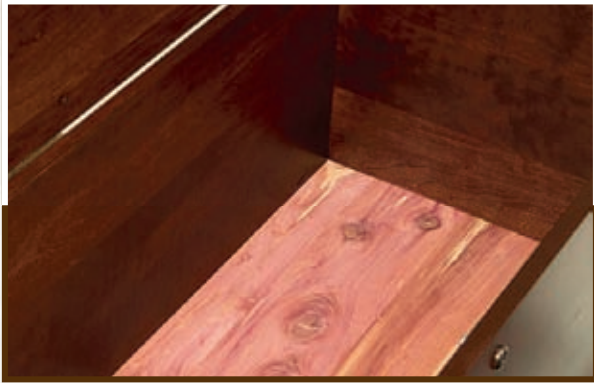
36½"L x 17¾"W x 17¾"H



"Play is often talked about as if it were a relief from serious learning. But for children play is serious learning. Play is really the work of childhood." Fred "Mr." Rogers

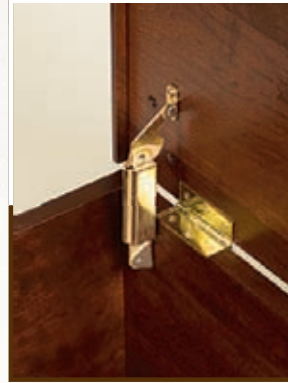
## *Standard Chest Features*

# STANDARD CHEST FEATURES



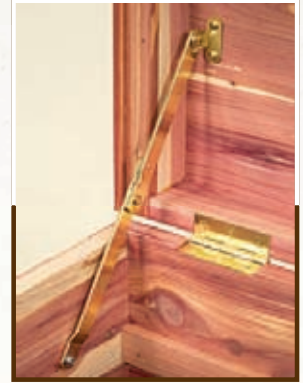
### **Cedar Bottom**

Chests are standard with a cedar bottom.



### **Hinges**

Oak and Cherry Chests are standard with the spring loaded support.



### **Hinges**

Solid Cedar Chests come with a hinge that allows it to open at 90° while providing support.

## STANDARD TRUNK FEATURES



### **Handles & Hardware**

Genuine leather handles and Brass-plated hardware give our trunks the finished, authentic touch and serve for excellent function. See page 25 for hardware choices.



### **Interior**

All trunks have an interior tray made of solid aromatic cedar. The cross-beams inside of the trunk lid add strength and an interesting structural feature.



# Optional Chest Features

## Cedar Sliding Tray

A Cedar sliding tray, 3" deep by half the length of the chest is available for all chests. Rails allow the tray to slide from side to side or be removed.



## Castors

Castors provides an easy way to maneuver the chests to select places in your room.

*See page 42 to see which chests this is available for.*

## Cedar Lining

Cedar protects your woolen, fur, or linen treasures from damage by moths.

*See page 42 to see which chests this is available for.*



## Dovetails

This historical detail adds value and beauty to your chest.

*See page 42 to see which chests this is available for.*

# CUSTOM ENGRAVING

Customize Your Chest's Front

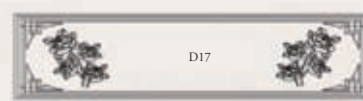


## CREATE A FAMILY HEIRLOOM

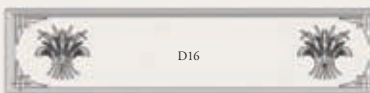
1. Choose Your Design
2. Specify your Wording  
(up to three lines)
3. Choose Your Font Style.



D15



D17



D16



D9

BLOCK LETTERS

Script 01

Script 02

## PERSONALIZE IT

#D-14 1 3/4" x 4" Flexi plate with brass finish engraved with the message of your choice! Mounts inside of lid unless otherwise specified.



# Engraving Options

## ENGRAVING OPTIONS

Add one of these engravings to your chest to make it even more special. Choose from one of these 17 designs to add to the front of your chest.



#D1 Bless Our Home - Grape Design



#D2 Oval Roses



#D3 Love Never Fails



#D4 Wheatland



#D5 Oval Grapes



#D6 Bless Our Home



#D7 Dutch Bird



#D8 Laugh Often



#D9 Personalized w/ Hearts & Roses



#D11 Cascade



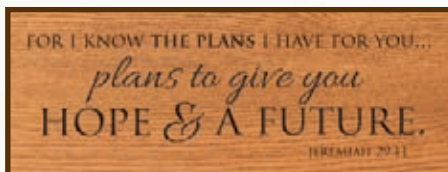
#D12 Folklore



#D13 Country Hearts



Psalm 46:10



Jeremiah 29:11



Psalm 62:5



Psalm 121:18



Jeremiah 31:3



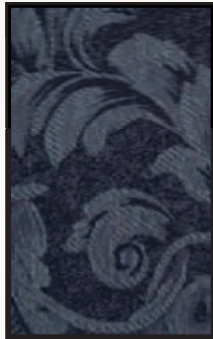
# *Fabric for Seat Cushions* FABRIC FOR SEAT CUSHIONS

Seat cushions are available on the Manchester, Springfield and Cambridge Series.

Large Size - 17" x 41 3/8"; Medium Size - 15 1/2" x 38"



#35 Green



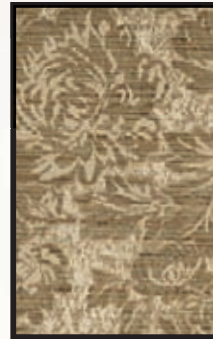
#56 Prussian



#50 Sage



#5 Jewel Green



#52 Coffee



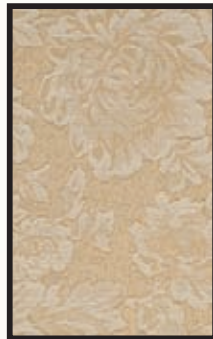
#58 Antique



#58 Blue



#48 Spa



#46 Pearl



#54 Burgundy



#62 Ferrara  
Sunset



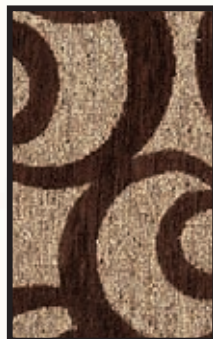
#64 Flatline  
Mocha



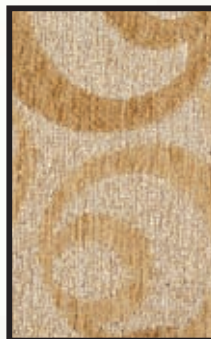
#66 Molly  
Onyx



#74 Molly  
Vintage



#68 Emboss  
Espresso



#70 Emboss  
Linen



#72 Vault  
Truffle



# Finish Options

## Oak Stains



OCS 101 S2  
Honey

OCS 104 Seely

OCS 112  
Provincial

OCS 116 Harvest

Tavern

OCS 226 Coffee

OCS 228 Rich  
Tobacco

Black

## Maple Stains



Natural

OCS 104 Seely

OCS 116 Harvest

OCS 225  
Mission Maple

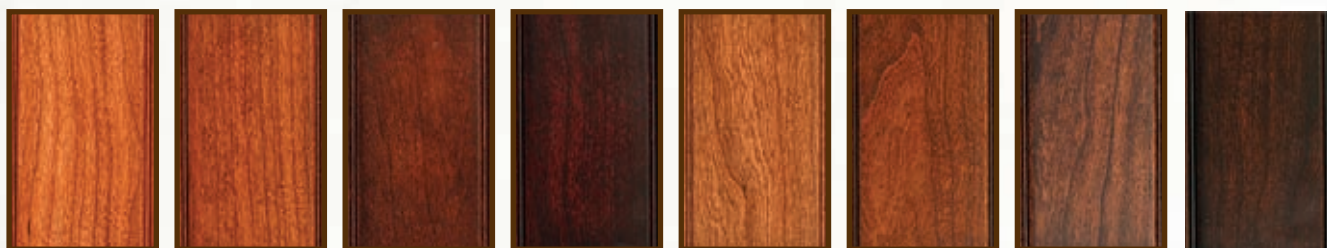
OCS 113  
Michaels

OCS 226 Coffee

OCS 227 Rich  
Cherry

OCS 228 Rich  
Tobacco

## Cherry Stains



Autumn Wheat

OCS 116 Harvest

OCS 106 Acres  
Cherry

OCS 229 Bing  
Cherry

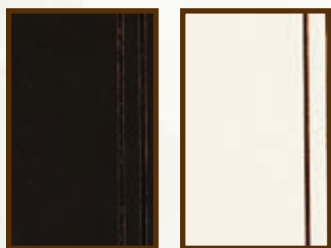
OCS 104 Seely

Nutmeg

Tavern

OCS 228 Rich  
Tobacco

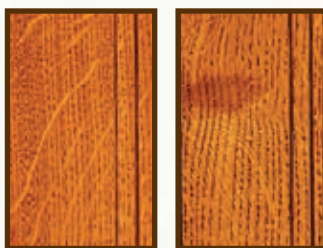
## Paint Colors



Black  
Rubthrough

Pearl White  
w/ Nantucket  
Glaze

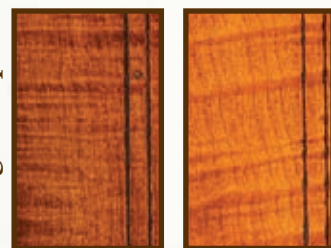
## Qtr. Sawn White Oak



Salem

OCS 113  
Michaels

## Tiger Maple



OCS 113  
Michaels

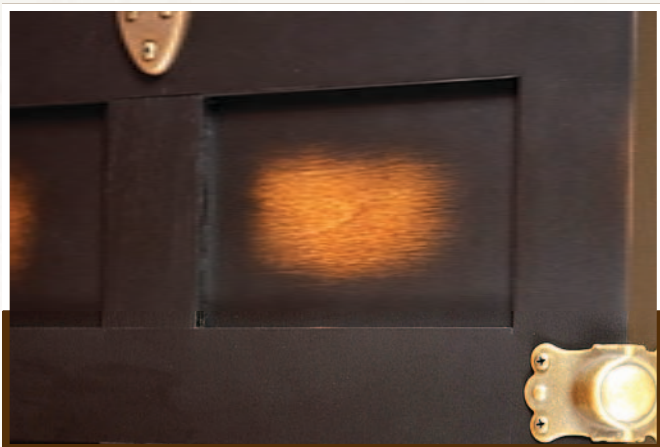
Salem

**Note:** Our finishing touches to our products preserve the distinctive character of the wood. Because our furniture is individually handmade, it may slightly vary in color due to variations in wood color. Stain and paint colors shown on products in this catalog may vary due to the catalog printing process. Similarly, we reserve the right to make minor changes and improvements other than what is shown or described in this catalog.



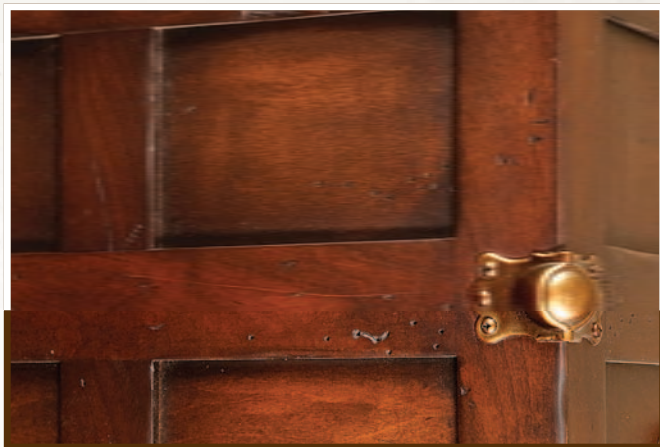
# Distressing Options

## DISTRESSING OPTIONS



### Legacy Black

This finish is painted with a Harvest stain undercoat. The edges get a rubthrough finish and the chest is finished off with a flat sheen finish.



### Old World Distressing

Distressing techniques are randomly applied to the face of your furniture throughout the design to simulate the look of age and wear. It may include rounded and worn corners and edges, rasping, dips, knife cuts simulating cracks, worm holes, chain distressing and shading. Glaze will be applied to further highlight the distressed area. It comes with a flat sheen to complete the old look.

## OUR WARRANTY

Cedar Ridge Furniture warrants its furniture products by providing a 10 year limited warranty to the original purchaser. Should any of our furniture products fail due to defects in material or workmanship under normal use within this period, Cedar Ridge Furniture will at its own discretion, repair or replace the defective part. This warranty is not transferable.

This warranty does not cover products which are misused, abused, mishandled, improperly installed, improperly stored, changed, modified, or are subject to extreme temperatures or extreme moisture levels. This warranty is not valid for products used for any purpose other than the purpose for which they were originally intended.

This warranty does not cover the cost of installation, removal, subsequent damage, or transportation of the defective product regardless of whether work was performed by a contractor, service company or yourself.

Variations in color and grain patterns are a natural characteristic of wood. Color changes may occur as a result of aging, exposure to light heat, and other natural and chemical elements. Color variations and changes are not covered by this warranty.

To submit a claim under this warranty, contact the nearest Cedar Ridge furniture dealer, or send a letter explaining the defect, with a dated sales receipt as proof of purchase to:

Attn: Claims Department  
Cedar Ridge Furniture, 112 Maxwell Hill Rd. Morgantown, PA 19543

## CARE INSTRUCTIONS

Conversion Varnish is the most commonly used finish used in the high-end furniture market. When properly applied and cared for, the beauty of your furniture's finish will be enjoyed for many generations. Conversion Varnish has excellent resistance to foods, beverages and common household chemicals. However to maintain the beautiful appearance of your furniture, a few care guidelines must be followed.

- Excessive waxing can cause moisture from a beverage can or glass to leave a milky white ring on the surface.
- Do not use cleaners containing bleach.
- Avoid cleaners with abrasives, they may scratch the finish.
- Do not allow cleaners containing ammonia to come in contact with your furniture's finish. Ammonia may turn oak black and painted pieces yellow.
- Dyes and inks may discolor the finish. The ink and dyes from newsprint and plastic bags may penetrate into the finish when moist.
- Conversion Varnish offers a very hard mar resistant surface, but like any finish, it may still be scratched or damaged if not cared for properly.

It should be noted that your new Conversion Varnish finish does not achieve its maximum performance properties for at least 30 days from the time it was finished. This is based on maintaining a temperature of at least 70 degrees.

### CLEANING GUIDELINES

Generally a soft damp cloth followed by a dry cloth will be all you need to clean the finish. If a cleaner is required, use only a very mild soap and wipe dry. A high quality furniture polish may be used occasionally. Apply polish with a soft cloth following manufacture's instructions.

**Follow these steps and you will be assured that your finished piece will continue to look good for many years to come.**

**CLEANING:** Fingerprints, cooking residues, tobacco smoke, etc. will accumulate on any finished surface. They will not damage the finish, but should be removed occasionally to restore the finish to its original state. Wipe the finish with a damp cloth using a non-wax polish or mild soap.

**DUST REMOVAL:** Dust build-up is simply airborne particles of dust collecting on the finish. If not properly removed, this build-up may dull or even scratch the finish. Simply wipe the finish with a cloth dampened with a mild detergent or polish.

**SPILLS:** Your finish is resistant to most household spills. If a spill should occur, it should be wiped up immediately to avoid any potential damage.

**EXCESSIVE EXPOSURE:** Heat, high humidity, direct sunlight or liquids can damage both the finish and the wood. Take care to avoid these conditions.

# CHEST KEY

## QUICK SHIP

We have five select chests in our Quick ship program that are available to be shipped within 3 Business days after receipt of order.

### Wood Type Key

11 = Cedar  
22 = Oak  
33 = Cherry  
44 = Maple  
55 = Qtr Sawn White Oak  
66 = Tiger Maple  
88 = Hickory

### Symbols Key

S = Standard  
O = Optional  
N/A = Not Available

	Description	Wood Species	Item #	Overall Dimensions W X D X H	Cubic Feet	Casters	Lock	Spring Lid Support	Dovetail Joints	Cedar Lining
BASIC	Mini	Cedar	10-11	24 x 13.5 x 14.5	1.4	N/A	O	N/A	O	N/A
	Small	Cedar	20-11	30 x 15.5 x 16.5	2.8	N/A	O	N/A	O	N/A
	QUICK SHIP Medium	Cedar	30-11	36 x 17.5 x 18.5	5.1	N/A	O	N/A	O	N/A
	Large	Cedar	40-11	42 x 18.5 x 19.5	6.7	N/A	O	N/A	O	N/A
FRANKLIN	Small	Cedar	33-11	36 x 17.5 x 17.5	3.6	O	S	N/A	O	N/A
	Medium	Cedar	44-11	42 x 18.5 x 19	4.9	O	S	N/A	O	N/A
	Large	Cedar	55-11	46 x 20 x 20.5	6.9	O	S	N/A	O	N/A
CHARLESTON	Medium	Oak	44-22	42 x 18.5 x 19	4.9	O	S	S	O	O
	Large	Oak	55-22	46 x 20 x 20.5	6.9	O	S	S	O	O
	Medium	Cherry	44-33	42 x 18.5 x 19	4.9	O	S	S	O	O
	Large	Cherry	55-33	46 x 20 x 20.5	6.9	O	S	S	O	O
SUMMERFIELD	Petite	Cedar	27-11	29 x 16.5 x 17	2.2	N/A	S	N/A	O	N/A
	Small	Cedar	37-11	36 x 17.5 x 18	3.3	O	S	N/A	O	N/A
	Medium	Cedar	72-11	42 x 18.5 x 19.5	4.5	O	S	N/A	O	N/A
	QUICK SHIP Large	Cedar	77-11	46 x 20 x 21.5	6.4	O	S	N/A	O	N/A
	Jumbo	Cedar	97-11	46 x 24.5 x 25.5	10.2	O	S	N/A	O	N/A
HARMONY	Small	Oak	37-22	36 x 17.5 x 18	3.3	O	S	S	O	O
	Medium	Oak	72-22	42 x 18.5 x 19	4.5	O	S	S	O	O
	Large	Oak	77-22	46 x 20 x 21.5	6.4	O	S	S	O	O
	Jumbo	Oak	97-22	46 x 24.5 x 25.5	10.2	O	S	S	O	O
	Small	Cherry	37-33	36 x 17.5 x 18	3.3	O	S	S	O	O
	Medium	Cherry	72-33	42 x 18.5 x 19	4.5	O	S	S	O	O
	Large	Cherry	77-33	46 x 20 x 21.5	6.4	O	S	S	O	O
	Jumbo	Cherry	97-33	46 x 24.5 x 25.5	10.2	O	S	S	O	O
	Small	Maple	37-44	36 x 17.5 x 18	3.3	O	S	S	O	O
	Medium	Maple	72-44	42 x 18.5 x 19	4.5	O	S	S	O	O
	Large	Maple	77-44	46 x 20 x 21.5	6.4	O	S	S	O	O
	Jumbo	Maple	97-44	46 x 24.5 x 25.5	10.2	O	S	S	O	O
STEAMER TRUNK	Oak		100-22	36 x 20 x 18	4.9	N/A	S	N/A	N/A	N/A
	QUICK SHIP Maple		100-44	36 x 20 x 18	4.9	N/A	S	N/A	N/A	N/A
	Hickory		100-88	36 x 20 x 18	4.9	N/A	S	N/A	N/A	N/A
	Tall Oak		124-22	36 x 20 x 24	7.2	N/A	S	N/A	N/A	N/A
	Tall Maple		124-44	36 x 20 x 24	7.2	N/A	S	N/A	N/A	N/A
	Tall Hickory		124-88	36 x 20 x 24	7.2	N/A	S	N/A	N/A	N/A
PLYMOUTH TRUNK	Oak		200-22	36 x 20 x 18	4.9	N/A	S	N/A	N/A	N/A
	Maple		200-44	36 x 20 x 18	4.9	N/A	S	N/A	N/A	N/A
	Hickory		200-88	36 x 20 x 18	4.9	N/A	S	N/A	N/A	N/A
	Tall Oak		300-22	36 x 20 x 24	7.2	N/A	S	N/A	N/A	N/A
	Tall Maple		300-44	36 x 20 x 24	7.2	N/A	S	N/A	N/A	N/A
	Tall Hickory		300-88	36 x 20 x 24	7.2	N/A	S	N/A	N/A	N/A



# CHEST KEY

	Description	Wood Species	Item #	Overall Dimensions W X D X H	Cubic Feet	Casters	Lock	Spring Lid Support	Dovetail Joints	Cedar Lining
MANCHESTER		Cedar	56-11	46 x 20 x 24.5	6.8	0	S	N/A	0	N/A
		Oak	56-22	46 x 20 x 24.5	6.8	0	S	S	0	0
		Cherry	56-33	46 x 20 x 24.5	6.8	0	S	S	0	0
SPRING FIELD	Medium	Cedar	4407-11	42 x 18.5 x 22	4.9	0	S	N/A	0	N/A
	Large	Cedar	5507-11	46 x 20 x 24.5	6.8	0	S	N/A	0	N/A
CAMBRIDGE	Medium	Oak	4407-22	42 x 18.5 x 22	4.9	0	S	S	0	0
	Large	Oak	5507-22	46 x 20 x 24.5	6.8	0	S	S	0	0
	Medium	Cherry	4407-33	42 x 18.5 x 22	4.9	0	S	S	0	0
	Large	Cherry	5507-33	46 x 20 x 24.5	6.8	0	S	S	0	0
CARRIAGE HOUSE	Tulip Foot	Oak	701-22	36.5 x 17.75 x 23.5	3.4	N/A	S	S	S	N/A
	Shaker Base	Oak	702-22	36.5 x 17.75 x 23.5	3.4	N/A	S	S	S	N/A
	Tulip Foot	Cherry	701-33	36.5 x 17.75 x 23.5	3.4	N/A	S	S	S	N/A
	Shaker Base	Cherry	702-33	36.5 x 17.75 x 23.5	3.4	N/A	S	S	S	N/A
	Tulip Foot	Maple	701-44	36.5 x 17.75 x 23.5	3.4	N/A	S	S	S	N/A
	Shaker Base	Maple	702-44	36.5 x 17.75 x 23.5	3.4	N/A	S	S	S	N/A
	Shaker Base	Tiger Maple	702-66	36.5 x 17.75 x 23.5	3.4	N/A	S	S	S	N/A
	Shaker Base	Qtr. Sawn Oak	702-55	36.5 x 17.75 x 23.5	3.4	N/A	S	S	S	N/A
SAVANNAH	Tulip Foot	Oak	601-22	36.5 x 17.75 x 23.5	4.9	N/A	S	S	S	N/A
	Shaker Base	Oak	602-22	36.5 x 17.75 x 23.5	4.9	N/A	S	S	S	N/A
	Tulip Foot	Cherry	601-33	36.5 x 17.75 x 23.5	4.9	N/A	S	S	S	N/A
	Shaker Base	Cherry	602-33	36.5 x 17.75 x 23.5	4.9	N/A	S	S	S	N/A
	Tulip Foot	Maple	601-44	36.5 x 17.75 x 23.5	4.9	N/A	S	S	S	N/A
	Shaker Base	Maple	602-44	36.5 x 17.75 x 23.5	4.9	N/A	S	S	S	N/A
	Shaker Base	Tiger Maple	602-66	36.5 x 17.75 x 23.5	4.9	N/A	S	S	S	N/A
	Shaker Base	Qtr. Sawn Oak	602-55	36.5 x 17.75 x 23.5	4.9	N/A	S	S	S	N/A
YORKTOWN	Medium	Oak	4400-22	42.5 x 19 x 19	4.9	0	S	S	0	0
	Large	Oak	5500-22	46.5 x 20.5 x 21	6.8	0	S	S	0	0
	Medium	Cherry	4400-33	42.5 x 19 x 19	4.9	0	S	S	0	0
	Large	Cherry	5500-33	46.5 x 20.5 x 21	6.8	0	S	S	0	0
MISSION	<b>QUICK SHIP</b>	Oak	3718-22	42.5 x 19.25 x 19	4.8	N/A	0	S	N/A	N/A
		Qtr Sawn Oak	3718-55	42.5 x 19.25 x 19	4.8	N/A	0	S	N/A	N/A
MAYFLOWER	Medium	Oak	423-22	42.5 x 18.5 x 21.5	5.8	0	S	S	N/A	0
	Large	Oak	523-22	46.5 x 20.5 x 22.5	7.3	0	S	S	N/A	0
	Medium	Cherry	423-33	42.5 x 18.5 x 21.5	5.8	0	S	S	N/A	0
	Large	Cherry	523-33	46.5 x 20.5 x 22.5	7.3	0	S	S	N/A	0
SHAKER 3 Panel	3 Panel	Oak	4219-22	42.5 x 19.25 x 19	5	N/A	0	S	N/A	N/A
	3 Panel	Cherry	4219-33	42.5 x 19.25 x 19	5	N/A	0	S	N/A	N/A
	<b>QUICK SHIP</b> 3 Panel	Maple	4219-44	42.5 x 19.25 x 19	5	N/A	0	S	N/A	N/A
SHAKER 2 Panel	2 Panel	Oak	3316-22	33 x 16.5 x 18	2.8	N/A	0	S	N/A	N/A
	2 Panel	Cherry	3316-33	33 x 16.5 x 18	2.8	N/A	0	S	N/A	N/A
	2 Panel	Maple	3316-44	33 x 16.5 x 18	2.8	N/A	0	S	N/A	N/A
Toy Chest		Maple	411-44	36.5 x 17.75 x 17.75	4.2	N/A	N/A	S	0	N/A
		Oak	411-22	36.5 x 17.75 x 17.75	4.2	N/A	N/A	S	0	N/A
	Engraved	Oak	421-22	42.5 x 18.75 x 18.75	5.2	N/A	N/A	S	0	N/A
	Plain	Oak	424-22	42.5 x 18.75 x 18.75	5.2	N/A	N/A	S	0	N/A

## QUICK SHIP

*We have five select chests in our Quick ship program that are available to be shipped within 3 Business days after receipt of order.*

## Wood Type Key

11 = Cedar  
22 = Oak  
33 = Cherry  
44 = Maple  
55 = Qtr Sawn White Oak  
66 = Tiger Maple  
88 = Hickory

## Symbols Key

S = Standard  
O = Optional  
N/A = Not Available



## DEALER INFORMATION