

dimension **four**⁴







contents

what's the big idea?	4
the dimension four system	5
when it's all put together...	6
entertainment consoles	8
entertainment corner consoles	14
entertainment armoires	16
entertainment wall units	22
office furniture	26
occasional tables	34
bookcases	40
kitchen islands	44
potpourri of pieces	47
step-by-step ordering	50
furniture styles	51
OCS stain colors	52
paint colors & finishing techniques	53
hardware	54





what's the big idea?

What does “Dimension Four” mean? It means quite simply that you can go beyond the three dimensions of width, depth and height to a fourth dimension where there’s a vast choice of options that other furniture makers simply don’t offer. While we do have standard sizes, we’ll also make almost any size and allow you to combine features in practically any way.

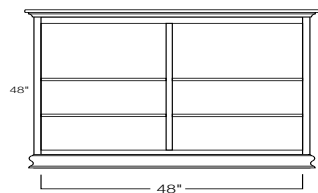
Dimension Four offers the traditional styles you’ve come to expect, built with world-famous Amish craftsmanship that uses construction techniques not found in ordinary factory furniture.

But we go way beyond what you expect with a modular concept that allows you to pick the exact dimensions you need, and then mix and match pieces to fit the space you’re furnishing.

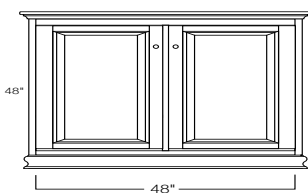
Ordering is simple: See page 50 for the step-by-step process that will lead you effortlessly to the finished piece you won’t find anywhere else!



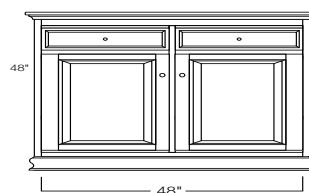
base Series examples



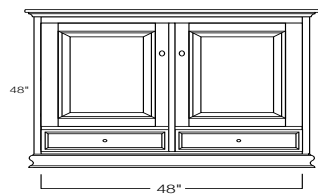
Series 100



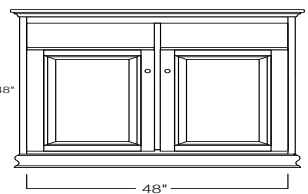
Series 200



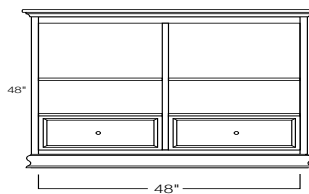
Series 300



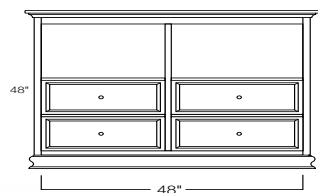
Series 400



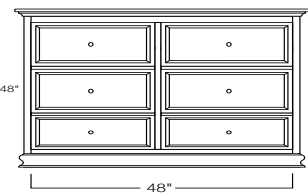
Series 500



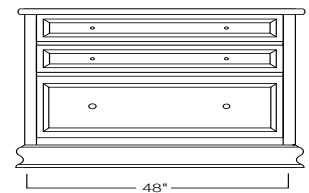
Series 600



Series 700



Series 800

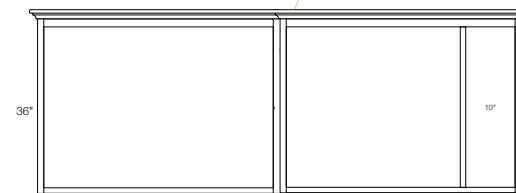


Series 900

the dimension four system

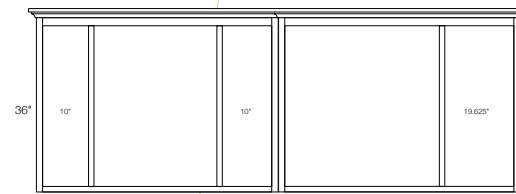
The reason you can make any piece for any need is because of our system of case configurations. These apply no matter what type of furniture you're ordering. Every furniture cabinet — TV bases, desks, bookcases, hutches and more — are based on these Series.

hutch Series



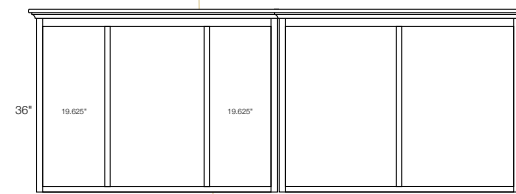
Series A

Series B



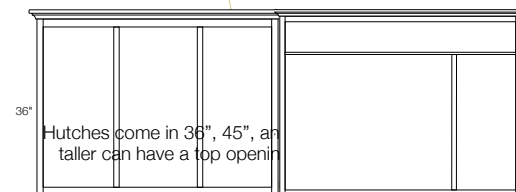
Series C

Series D



Series E

Series F



Hutches come in 36", 45", and taller can have a top opening

NOTE: Width dimensions throughout this catalog
are for cabinets only—the addition of crown molding adds
3½" overall width to any piece.



When it's all put together...

You can combine case configurations to make a unique single piece, then combine pieces to make larger suites of furniture to fit any space. The entertainment center below combines two Series – 100 and 200.

Flat Top Bridge 840422



Bookcase 248418, Series 200
with optional fixed shelf in top.
(Also shown at right.)

TV Base 482318, Series 200
Shown in Brown Maple, OCS116
Harvest Stain/Standard Finish,
Classic Style



At left, three bookcases, all 200 Series, were combined to make a gorgeous and functional corner unit. Below, base Series 200 and 900 were topped with hutch Series A with glass doors to make a custom piece.



**Bookcase 367214,
Series 200**

Shown with optional oval arch cutout, glass shelves, and light in top



**Corner Bookcase 308419,
Series 200**

Corner model, 1184 White Paint, shown with optional oval arch cutout, glass shelves, and light in top



**Bookcase 487214,
Series 200**

Shown with optional oval arch cutout, glass shelves, and light in top



**Desk Base 323218,
Series 200/Series 900**

Shown in Oak, OCS116 Stain, Classic Style
Desk Hutch, 324514, Series A



TV Base 483218, Series 200
Shown in Oak, OCS116 Stain, Mission Style,
optional corner model





entertainment consoles

When it comes to entertainment units, everyone has a different idea of what's fabulous. With Dimension Four, the ways to achieve the perfect result are nearly unlimited. Beginning with our broad variety of standard cabinets in any Series configuration, and any of four styles —Shaker, Mission, Classic or Cottage —you can go on to choose the wood you love, paint or stain, standard or distressed finish, and a wide range of elegant hardware. There's virtually nothing you can imagine that you can't create.



TV Base 743218, Series 200
Shown in Oak, OCS116 Stain, Classic Style



TV Base 603218, Series 200
Shown in Rustic Cherry, OCS116 Stain/
Legacy Finish, Primitive Shaker Style

Classic and classy,
the Primitive Shaker
base unit in Series
200 shown at left
shows off a warm
Legacy finish. The
inset below zooms
in on the luxurious
surface.



Legacy Finish Detail



TV Base 603218, Series 200/Series 100
Shown in Oak, 1620 Black/Heritage Finish, Classic Style



TV Base 603218, Series 400
Shown in Rustic Cherry, OCS116 Stain/
Heirloom Finish, Classic Style



TV Base 603218, Series 200/800
Shown in Brown Maple, custom Stain, Classic Foot

entertainment consoles



Our many case configurations make creating a piece that suits your specific requirements easy. Series 100, 200, 400, 500, and 800 were all used in creative ways to make the practical and beautiful finished products shown here.



TV Base 483218, Series 500
Shown in Oak, OCS229 Stain, Shaker Foot



TV Base 483218, Series 400
Shown in Oak, OCS 227 Stain, Classic Style



TV Base 483218, Series 200/100
Shown in Oak, OCS116 Stain, Mission Style



TV Base 483218, Series 200
Shown in Oak, OCS116 Stain, Mission Foot



TV Base 483218, Series 200
Shown in Oak, OCS116 Stain, Shaker Foot



TV Base 483218, Series 200
Shown in Oak, OCS116 Stain, Classic Foot



TV Base 483218, Series 200/100
Shown in Brown Maple, 7785 Sage/Standard Finish,
OCS113 top, BF2 feet, Cottage Style



TV Base 483218, Series 200/100
Shown in Brown Maple, custom Yellow Paint/
Standard Finish, BF15 feet, Cottage Style



TV Base 483218, Series 200/100
Shown in Brown Maple, custom Blue Paint/
Standard Finish, BF10 feet, Cottage Style

entertainment consoles



Simply by changing paint, stain and foot options, a whole different feel is achieved on the Cottage style TV base units pictured in the bottom row.



TV Base 603218, Series 200

Shown in Oak, OCS116 Stain/Standard Finish, Classic Style



TV Base 482318, Series 600

Shown in Brown Maple, 1462 Colonial Blue Paint/Standard Finish, OCS104 top, BF12 feet, Cottage Style



TV Base 482318, Series 600

Shown in Brown Maple, OCS113 Stain/Standard Finish, BF5 feet, Cottage Style



TV Base 362319, Series 200
Shown in Brown Maple, OCS227 Stain, Classic Style,
optional corner model



TV Base 363219, Series 400
Shown in Oak, OCS116 Stain, Classic Style



TV Base 483218, Series 200
Shown in Oak, OCS116 Stain/Standard Finish, Mission
Style, optional corner model
TV Hutch 483618, Series A
Shown with optional bi-fold doors



TV Base 412319, Series 200
Shown in Oak, OCS116 Stain, Classic Style



entertainment corner consoles

Want options for arranging your entertainment space? These corner units multiply your choices for room layouts. No longer does your TV have to fit up against a wall. Tuck it into a corner to create a cozy and relaxing oasis.



TV Base 483218, Series 200
Shown in Brown Maple, OCS113 Stain, Classic Style



TV Base 362319, Series 600
Shown in Brown Maple, 7785 Sage/Heritage Finish, Classic Style,
2-Tone Color Scheme



TV Base 742318, Series 200
Shown in Oak, OCS112 Stain/Standard Finish, Classic Style
TV Hutch 744510, Series C
with optional glass doors



entertainment armoires

If you're like most people today, you have a pretty good idea what you want in home decor – and that includes your entertainment furniture. Your vision can easily become reality with Dimension Four. A bright and airy great room or a rugged man cave can each be furnished with the same basic piece, but with two completely different looks to match their environments by choosing appropriate woods, stains, finishes and hardware.



TV Base 742318, Series 200

Shown in Brown Maple, OCS230 Stain/Standard Finish, Classic Style,
with optional Oval Arch doors

TV Hutch 744510, Series C

Shown with optional Oval Arch cutout in top



Dimension Four pieces can be as practical as you want them to be. Every base and hutch unit can become extra storage space with the addition of doors and shelves on the side. Storage units add 10 $\frac{1}{2}$ " to the width of cabinets.



TV Base 483218, Series 200
Shown in Oak, OCS228 Stain/Standard Finish, Oval Arch cutout Style
TV Hutch 483618, Series A



TV Base 483218, Series 200
Shown in Oak, OCS112 Stain, Classic Style, with optional end storage unit. NOTE: storage unit adds 10 $\frac{1}{2}$ " to overall width of cabinet.

TV Hutch 483618, Series A
Shown with optional bi-fold doors



TV Base 483218, Series 200
Shown in Oak, OCS112 Stain, Classic Style
TV Hutch 483618, Series A

entertainment armoires



**TV Base 483218, Series 200
with Custom Grids**

Shown in Oak, OCS104 Stain, Mission Style

TV Hutch 485418, Series A

Shown with optional fixed top shelf and optional glass doors in top section

The two units at left are the same cabinet configuration... but look how vastly different they appear! Making the difference is as simple as specifying different paints and stains, adding plain or grid-style glass doors on top, and ordering hardware that works best for each look.



TV Base 483218, Series 200

Shown in Brown Maple, 1060 Paint/
??? glaze, Classic Style

TV Hutch 485418, Series A

Shown with optional fixed top shelf and
optional glass doors in top section



TV Base 843218, Series 200/Series 700

Shown in Rustic Cherry, OCS116 Harvest Stain/Legacy Finish, Classic Style

TV Hutch 845410, Series C with Fixed Top Shelf



TV Base 483218, Series 200/100
Shown in Oak, OCS116 Stain/Standard Finish, Mission Style
TV Hutch 484510, Series A



TV Base 483218, Series 200/100
Shown in Oak, Custom Dark Walnut Stain/Standard Finish, Classic Style
TV Hutch 484510, Series A



Both sets of armoires on this spread share the same series configurations. But different choices of styles, door treatments and hardware have made each subtly unique. That's the beauty of Dimension Four. You can order any piece just as you see it in the catalog or on the showroom floor... or make a piece that's one-of-a-kind to satisfy your creative urges.



TV Base 722318, Series 200/Series 700
Shown in Oak, OCS116 Stain/Standard Finish, wClassic Style
TV Hutch 724518, Series D



TV Base 722318, Series 200/Series 700
Shown in Oak, OCS116 Stain/Standard Finish, Mission Style
TV Hutch 724518, Series D



Bookcase 246418
(Also shown at right.)

TV Base 483218
Shown in Cherry, OCS103 Michaels Stain, Shaker Style
TV Hutch 483618, Series A
with optional bi-fold doors

entertainment wall units

At Dimension Four, standard product lines can be just the beginning if you want to use your imagination and “color outside the lines.” Combine bookcases with TV bases, hutches, bridges and towers in a variety of ways to end up with stunningly original entertainment wall units.

Bridge Cabinet 482117, Series 100
Shown with optional Oval Arch cutout



Bookcase 307214, Series 200
Shown in Brown Maple, 1184 White Paint/
Standard Finish, Classic Style, with optional
Oval Arch cutout. (Also shown at right.)

Bookcase 483014, Series 600
Shown in Brown Maple, 1184 White Paint/
Standard Finish, Classic Style



With Dimension Four you can use pier towers with TV bases and top bridges to create unique units. Vary the wood species, style options and finishing techniques for pieces that will have your friends asking where in the world you found them.

TV Hutch 485419, Series A
Shown with fixed top shelf and optional bi-fold doors



Bookcase 248216, Series 200
with optional fixed shelf in top
(Also shown at right.)

TV Base 483218, Series 200
Shown in Brown Maple, OCS230 Onyx
Stain/Standard Finish, Classic Style



Same unit but in Mission Style, Oak with
OCS116 Harvest Stain



Same unit but in Cottage Style with Shaker
moldings, Brown Maple with 1060 Paint



**Bookcase 247218,
Series 700/200**
(Also shown at right.)

**TV Base 603218,
Series 800/200**
Shown in Oak, OCS116 Harvest
Stain, Classic Style

Flat Bridge 840422



**Bookcase 248218,
Series 200/Series 100**
with optional fixed shelf in top
(Also shown at right.)

TV Base 542317, Series 200
Shown in Brown Maple, OCS116 Stain/
Heirloom Finish, Classic Style

Flat Bridge 840422



**Bookcase 246418,
Series 200**
(Also shown at right.)

TV Base 542317, Series 200
Shown in Oak, OCS116 Stain,
Classic Style

Flat Bridge 840422



**Bookcase 184818,
Series 200**
(Also shown at right.)

TV Base 482317, Series 200
Shown in Oak, OCS101 Stain,
Classic Style

Credenza Hutch 604518, Series F
with optional glass doors

Credenza Base 603218

Desk Base 603228 (back view)
Shown with optional Executive Desk back and
raised panel sides

office furniture

Begin with our corner top piece that joins two perpendicular base cabinets and build your office furniture to perfectly match your space. For units that will be seen from all sides, add raised panel backs. Put functional hutches on top, and pullout trays on full extension drawer slides (standard in all desk pedestals). Your options are wide open.



Pullout tray is standard on all desk pedestals



Desk Base 603228, Series 900

Shown in Wormy Maple, Natural/Legacy Finish, Classic Style, with Executive double panel raised panel sides

4



Credenza Base 603218, Series 200/900/200
Shown in Wormy Maple, Natural/Legacy Finish, Classic Style



Credenza Base 603218, Series 1000
Shown in Wormy Maple, Natural/Legacy Finish, Classic Style



Corner Connector 3230
with keyboard tray and optional bottom toe kick shelf



Credenza Base 603218, Series 200
Shown in Wormy Maple, Natural/Legacy Finish, Classic Style
Credenza Hutch 604518, Series F
with optional glass doors

Take any base and add a matching hutch top to meet any storage or display need. Bases with pullout trays are perfect for holding laptops or keyboards (or pad and paper if your prefer).

office furniture



Desk Base 323218,
Shown in Oak, OCS116 Stain,
Classic Style

Desk Base 323218,
Shown in Oak, OCS116 Stain, Classic Style
Desk Hutch, 324514, Series A
with optional fixed shelf



Lateral File Base 323218,
Series 1000
Shown in Oak, OCS116 Stain, Classic Style
Desk Hutch, 324514, Series A
with optional fixed shelf



Lateral File Base 323218,
Series 1000
Shown in Oak, OCS116 Stain,
Classic Style



Vertical File Cabinet
193218, Series 1000
Shown in Oak, OCS102 Stain,
Classic Style



Desk Base 323218,
Series 200/Series 900
Shown in Oak, OCS116 Stain, Classic Style
Desk Hutch, 324514, Series A
with optional glass doors



Desk Base 323218,
Series 200/Series 900
Shown in Oak, OCS116 Stain,
Classic Style



**Desk Base 453218,
with Series 900**
Shown in Oak, OCS116 Harvest Stain/
Standard Finish, Classic Style



Desk Base 453218 with Series 900
Shown in Oak, OCS116 Harvest Stain/
Standard Finish, Classic Style
Desk Hutch 454510, Series B
with optional fixed shelf



Desk Base 603218, Series 900
Shown in Oak, OCS116 Harvest Stain/
Standard Finish, Classic Style



Corner Connector 1830

Desk Base 603218, Series 900
Shown in Oak, OCS116 Harvest Stain/
Standard Finish, Classic Style

**Lateral File Base 323218,
Series 1000**



Desk Base 603218, Series 900
Shown in Oak, OCS116 Harvest Stain/
Standard Finish, Classic Style

Desk Hutch 604510, Series C
Shown with optional fixed shelf



**Writing Desk Base 603218,
Series 900** (variation)
Shown in Rustic Cherry, OCS116 Harvest Stain/
Legacy Finish, Primitive Shaker Style



**Writing Desk Base 603218,
Series 900** (back view)
with optional Executive Desk option



**Desk Base 503218,
Series 900**
Shown in Oak, OCS103 Mx Stain,
Classic Style



Think outside the main rooms! Wherever there's a hallway, foyer, den or unconventional space, you can put that area to good use. A hutch on a slant front desk can be used for pretty much anything you can dream up.

**Slant Front Desk Hutch 323610,
Series A**



**Slant Front Desk 234214,
Series 300,**
Shown in Oak, OCS104 Seely Stain/
Standard Finish, Classic Style



Optional raised panel lid



**Slant Front Desk 234214,
Series 300,**
Shown in Oak, OCS112 Provincial Stain/
Standard Finish, Classic Style



occasional tables

Occasional tables are available in cabinet styles as well as a wide variety of leg and skirting styles so you can combine them with entertainment units, desks or bookcases to create living room suites that match perfectly.

Choose between standard cabinet backs or optional raised panel backs that are perfect if your cabinet back is not hidden against a wall. Any standard option that's available in our other product line is also available in our occasional table product line too.



Bookcase 483614, Series 600
Shown in Brown Maple, 1184 Paint/
Standard Finish, Classic Style,
with optional Oval Arch cutout in top



Coffee Table 382128, Series 600
Shown with top tray, open center and 2 drawers, in Brown Maple, OCS230 Onyx Stain, Classic Style



Pullout tray shown.



End Table 142526, Series 600
Shown in Brown Maple, OCS230 Onyx Stain, Classic Style



End Table 182526, Series 600
Shown in Brown Maple, OCS230 Onyx Stain, Classic Style



Coffee Table 482128, Series 200
Shown in Brown Maple, OCS116/Heirloom Finish, Classic Style



End Table 182526, Series 200
Shown in Brown Maple, OCS116/Heirloom Finish, Classic Style



End Table 262526, Series 200
Shown in Brown Maple, OCS112/Heirloom Finish, Classic Style



Lamp Table 222526, Series 600
Shown with pullout drawer, Brown Maple, OCS230 Onyx Stain, Classic Style



Coffee Table 482128, Series 600
Shown in Brown Mapl, 1184 White Paint/Standard Finish, optional oval arch cutout, Classic Style



End Table 182526, Series 600
Optional oval arch cutout



Optional raised panel back
(adds 2" to overall depth)



Bookcase 483614, Series 600
Shown with 3 extra drawers, Brown Maple, OCS230 Onyx Stain, Classic Style



Hall Table 482816
Series 130,
Country French legs



End Table 182222
Rectangular, Series 130,
Country French legs



End Table 622227
Oval, Series 130,
Country French legs



Coffee Table 421724
Series 130,
Country French legs



Coffee Table 361736
Series 130
Country French legs



End Table 182222
Rectangular, Series 120
Country Shaker legs

Create your own designs by mixing and matching leg styles and skirting styles, or adding bottom shelves to suit your personal tastes. 28" deep coffee tables are double sided, with doors and drawers front and back. 22" deep coffee tables are single sided, with raised panel backs standard.



Hall Table 362816
Rectangular, Series 110
Queen Anne legs



End Table 222227
Oval, Series 110
Queen Anne legs



End Table 182222
Rectangular, Series 110
Queen Anne legs



Coffee Table 271746
Oval, Series 110
Queen Anne legs





#875 Oval End Table
19"w x 26"d x 23"h
Shown in Oak



#845 Square End Table
26"w x 16½"d x 27"h
Shown in Oak



#880 Oval Coffee Table
42"w x 20"d x 18"h
Shown in Oak



#825 Round Lamp Table
20"w x 20"d x 27"h
Shown in Oak



#835 Rectangular Hall Table
26"w x 16½"d x 27"h
Shown in Oak



#870 Console Table
36"w x 14"d x 27"h
Shown in Oak



#810 Half Round Table
19½"w x 11"d x 27"h
Shown in Oak



#875 Oval End Table
19"w x 26"d x 23"h
Shown in Cherry



#845 Square End Table
20"w x 20"d x 27"h
Shown in Cherry



#880 Oval Coffee Table
42"w x 20"d x 18"h
Shown in Cherry



#825 Round Lamp Table
20"w x 20"d x 27"h
Shown in Cherry



versatile bookcases

When is a bookcase more than a bookcase? When it can serve as a TV stand or be combined with other units to make large suites that become the focal point of a beautiful room. Or when adding doors or drawers with raised panel sides. Or by choosing glass sides that turn it into a stunning curio cabinet. A bookcase can also become a pier tower when you select a narrow width.



Bookcase 483614, Series 200
Shown in Oak, OCS112 Stain, Classic Style



Bookcase 367214, Series 100
Shown in Brown Maple, 1350 Paint/Heirloom Finish, BF18 feet, Cottage Style, optional oval arch cutout



Use standard units to create your own custom wall libraries, entertainment centers, trophy cases, closet wall units and more.



Bookcase 187214, Series 200

Shown with optional oval arch cutout, glass shelves, and light in top



Bookcase 308419, Series 200

Corner model, 1184 White Paint, shown with optional oval arch cutout, glass shelves, and light in top



Bookcase 187214, Series 200

Shown with optional oval arch cutout, glass shelves, and light in top



Bookcase 367214, Series 200

Shown with optional oval arch cutout, glass shelves, and light in top



Bookcase 308419, Series 200

Corner model, 1184 White Paint, shown with optional oval arch cutout, glass shelves, and light in top



Bookcase 487214, Series 200

Shown with optional oval arch cutout, glass shelves, and light in top

versatile bookcases



Raised panel sides, glass panel sides for curios, flush cut left or right to create wall units, widths under 36" for corner models ... use your imagination to fill your space your own special way. The beauty of Dimension Four is in its flexibility. Homeowners are truly in control because "standard" is merely a starting point for combining features in hundreds of different ways.



Bookcase 424810, Series 200
Shown in Oak, OCS116 Stain/
Standard Finish, Shaker Cutout Style



Bookcase 484814, Series 200
Shown in Oak, OCS116 Stain/
Standard Finish, Mission Cutout Style



Bookcase 366014
Series 700 in bottom, Series 200 in top,
RP doors, shown in oak wood, OCS102 Stain/
Standard Finish, Classic Style



Bookcase 364814, Series 200
Shown in Oak, OCS116 Stain/
Standard Finish, Classic Style, with custom full
length raised panel doors



Kitchen Island Base 443519, Series 300
Shown in Oak, OCS102 Fruitwood Stain, Classic Style,
Kitchen Island Top 3064
Regular Top



kitchen islands

The kitchen is where the family gathers today, and that makes kitchen islands a central piece of home furniture. Our islands all feature raised panel fronts, backs and sides to look great from every angle. And of course they're available in every style, wood, finish and hardware to fit every decor, with 19" and 25" cabinet depths. When it comes to tops, we have islands covered in style! We feature a one-inch thick top as standard, and offer a wide variety of options including 1½" butcher block (2" and 2½" on request), Wilsonart laminated tops, Living Stone tops, Hanstone quartz, granite tops, and decorative concrete tops.



Tilt out waste basket option



All Kitchen Islands come standard with Raised Panel backs and Raised Panel sides. Island shown is 58" wide.



Kitchen Island Base 303519, Series 300

Shown in Brown Maple, 1620 Black/
Heritage Finish, Classic Style

Kitchen Island Top 3048

Shown in Maple, OCS225 Stain



Kitchen Island Base 583519, Series 300

Shown in Brown Maple, OCS227 Stain,
Classic Style

Kitchen Island Top 3048

Shown in Laminate



Kitchen Island Base 443519, Series 300

Shown in Brown Maple, 1060 Paint/ Heirloom Finish, Classic Style,
with tilt-out wastebasket on left

Kitchen Island Top 3064

Shown in Oak



Kitchen Island Base 303519, Series 100

Shown in Brown Maple, 1060 Paint/
Standard Finish, in Classic Style

Kitchen Island Top 2248

Shown in Oak



Kitchen Island Base 583519, Series 300

Shown in Brown Maple, 1060 Paint/Standard Finish, Classic Style,
with tilt-out waste basket on right

Kitchen Island Top 3064

Shown in Oak



Kitchen Island Base 583519, Series 300/Series 800

Shown in Brown Maple, 1184 Paint/
Standard Finish, in Classic Style

Kitchen Island Top 3078

Laminate top



potpourri of pieces

All mantel shelves available in
6.5" and 8.5" deep



#15A - 18"w x 6.5"d
#15B - 18"w x 8.5"d



#16A - 24"w x 6.5"d
#16B - 24"w x 8.5"d



#17A - 36"w x 6.5"d
#17B - 36"w x 8.5"d



#18A - 48"w x 6.5"d
#18B - 48"w x 8.5"d



#19A - 60"w x 6.5"d
#19B - 60"w x 8.5"d



#40 Double Wastebasket
40½"w x 36"h x 16"d
Shown in Oak, OC116 Harvest Stain



Porch Rockers

Solid Maple Rockers are available in all indoor stain or paint finishes; in any of our paint colors in a durable exterior paint; or in Sikkens exterior deck stains or clear coat.



#35 Wastebasket Cabinet
22"w x 36"h x 16"d
Shown in Oak, OCS116 Harvest Stain



#36 Wastebasket Cabinet With Drawer
22"w x 40"h x 16"d
Shown in oak wood, OCS #116 Harvest Stain



#103 Lazy Susan
16" dia.



#102 Lazy Susan with Napkin Holder
14" dia.



#603 5-ft. Coat Rack



#604 4-ft. Coat Rack
Shown in standard, with optional acorn engraving, and in black finish with different style/color hooks



#605 3-ft. Coat Rack
Shown standard, and with optional acorn engraving and different style/color hooks



#1065 3-ft. Farm Bench
36" w x 12" d x 18" h



#1066 4-ft. Farm Bench
48" w x 12" d x 18" h



#1067 5-ft. Farm Bench
60" w x 12" d x 18" h



#1282 Wrought Iron Plant Stand with Wood Top
15" dia. x 30" h

#1281 Wrought Iron Plant Stand
15" dia. x 23" h

#1280 Wrought Iron Plant Stand
15" dia. x 18" h

Note: We plan to make the following products available soon:

Medicine cabinets with glass, mirror or wood doors

Foldable Leg Benches in various lengths

Foldable Leg Tables in various lengths



#720 Oval Mirror
19½"w x 32"h



#720 Oval Mirror
19½"w x 32"h



#710 Rectangular Wall Mirror
18"w x 32"h



#714 Rectangular Wall Mirror
42"w x 28"h



#985 4-Pane Wall Mirror with Shelf
20"w x 6"d x 37"h



#985 6-Pane Wall Mirror with Shelf
20"w x 6"d x 37"h

Available options: oval arch frames, no grids, and 1 or 2 small drawers instead of shelf brackets.



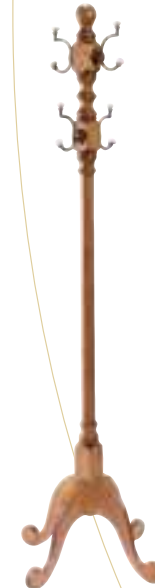
#401 Plain Turned Clothes Tree
22"w x 22"d x 67"h



#402 Rope Turned Clothes Tree
22"w x 22"d x 67"h
Reeded and Spindle Turned also available



#401 Plain Turned Clothes Tree
22"w x 22"d x 67"h



#401 Plain Turned Clothes Tree
22"w x 22"d x 67"h



#402 Rope Turned Clothes Tree
22"w x 22"d x 67"h
Reeded and Spindle Turned also available



step-by-step ordering

1 choose an Item

2 decide on size

Every piece is available in a wide variety of standard widths and heights. In addition, we will custom make any piece to your exact size requirements.

3 pick a configuration

Cabinet furniture is offered in 9 standard case configurations, Series 100 through 900. These demonstrate the wide variety of choices you have for doors, drawers, shelves and open areas. For examples, see page 5.

4 select a style

Choose from Shaker, Mission, Classic, and Cottage. Styles are determined by the shapes of crown and base molding. See page 51 to select your style.

5 choose a wood species

Select from among Red Oak, Quarter Sawn White Oak, Wormy Maple, Brown Maple, Cherry, and Rustic Cherry.

6 pick your stain...

We use OCS stain colors for beautiful rich stains that remain consistent from piece to piece. See page 52 for OCS stain colors on select woods. Keep in mind that we can put any stain on any wood; what you see are merely examples to get you started toward your final choice!

...or your paint

We offer 22 standard paint colors, shown on page 53. We can also apply any brand name paint or stain supplied to us for a \$75 charge.

7 select the finish

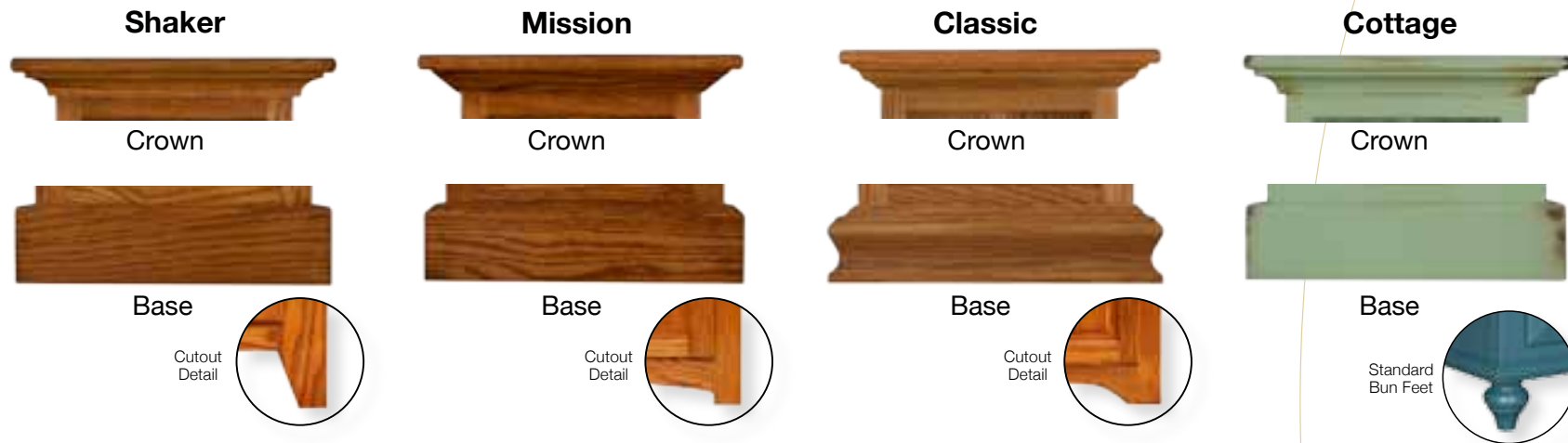
Choose from Standard, Heritage, Vintage, Heirloom or Legacy. For examples of how they look in various stains and on different woods, see page 53. Note: any piece can be finished with these techniques, even those that you bring to us from other manufacturers. Ask your dealer for a quote.

8 choose hardware

We have a large variety of hardware to finish off your furniture with the exact feel and look you want. See pages 54-55 for hardware options. Plus, for an additional charge we can get any piece of hardware from Hershberger or C.H. Briggs. You can also supply your own hardware for us to install, or have us drill holes so you can install the hardware yourself.



furniture styles



Top cross piece cutout styles,
Also optional as bottom cutouts.



Straight Shaker



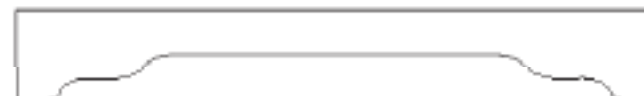
Oval Mission Arch



Classic Arch



Country Arch



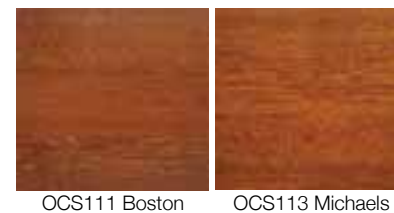
Traditional

4 OCS stain colors

Oak



Quarter Sawn Oak



Cherry



Brown Maple

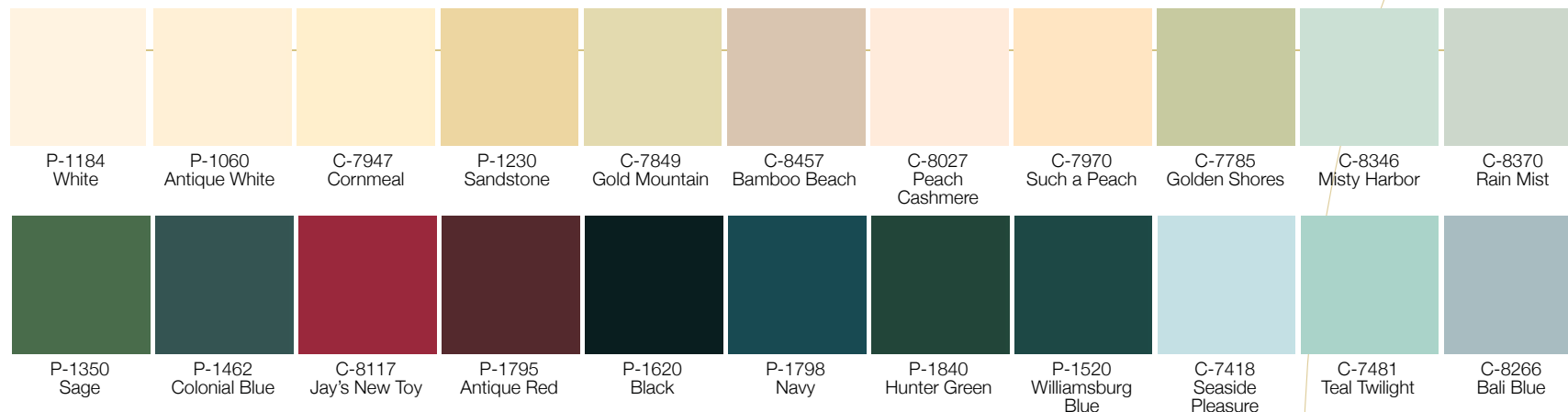


Note: All stains can be applied to all wood species. While our standard is OCS colors, we can do custom colors on request. You are welcome to bring unfinished pieces from other makers to be finished by us. Hardwoods are recommended for best results.

Note: Colors shown are approximate only.

paint colors

Below are our standard paint colors. As with stains, we will gladly match any paint sample you supply as closely as possible. Note: Colors shown are approximate only.



finishing techniques

Techniques include Standard and four levels of distressing, applied to either paint or stains. Below are examples... Ask us for exactly what you want!





elegant hardware

No matter what style furniture you choose, you'll find matching hardware to complete it beautifully! From flat black to wrought iron to antique English to satin nickel — even wood pulls and knobs — there's the perfect hardware to complement your cabinetry.



A1581-ORB
Oil Rubbed
Bronze
1 1/4" dia.

A1580-ORB
Oil Rubbed
Bronze
3" c/c

A1581-WN
Weathered
Nickel
1 1/4" dia.

A1580-WN
Weathered
Nickel
3" c/c

A1581-WID
Wrought Iron
Dark
1 1/4" dia.

A1580-WID
Wrought Iron
Dark
3" c/c

A53001-ORB
Oil Rubbed
Bronze
1 1/4" dia.

A53004-ORB
Oil Rubbed
Bronze
96 mm c/c

A53001-FB
Flat Black
1 1/4" dia.

A53004-FB
Flat Black
96 mm c/c

A53001-G10
Satin Nickel
1 1/4" dia.

A53004-G10
Satin Nickel
96 mm c/c



A1586-G10
Satin Nickel
1 1/4" dia.



A1590-G10
Satin Nickel
3" c/c



A1586-WN
Weathered
Nickel
1 1/4" dia.



A1590-WN
Weathered
Nickel
3" c/c



A1586-ORB
Oil Rubbed
Bronze
1 1/4" dia.



A1590-ORB
Oil Rubbed
Bronze
3" c/c



A1586-WID
Wrought Iron
Dark
1 1/4" dia.



A1590-WID
Wrought Iron
Dark
3" c/c



DF96-PB
Polished Brass
1 1/4" dia.



DF95-PB
Polished Brass
3" c/c



K88
Lancaster
Antique
1 1/4" dia.



A53014-G10
Satin Nickel
1 1/4" dia.



A53003-G10
Satin Nickel
96 mm c/c



A53014-ORB
Oil Rubbed
Bronze
1 1/4" dia.



A53003-ORB
Oil Rubbed
Bronze
96 mm c/c



A53004-FB
Flat Black
1 1/4" dia.



A53003-FB
Flat Black
96 mm c/c



K3910-SN
Satin Nickel
1 1/4" dia.



K3910-ORB
Oil Rubbed
Bronze
1 1/4" dia.



K3910-BL
Black
1 1/4" dia.



D942-BL
Black
1 1/4" sq.

D552-BL
Black
1 1/4" x 4 1/2"
3" c/c

D553-BL
Black
4 1/2" x 1 1/4"
3" c/c

K803-BI
Black Iron
1 1/4" dia.

K807-BI
Black Iron
3" boring

K811-MB
Satin Nickel
3" boring

K805-SN
Satin Nickel
3" boring

D521-SN
Satin Nickel
3" c/c

D521-W
Wrought Iron
3" c/c

D521-BL
Black
3" c/c

K156-AE
Antique English
3" c/c



A1585-G10
Satin Nickel
1 1/4" dia.

A1584-G10
Satin Nickel
3" c/c



A1585-WN
Weathered
Nickel
1 1/4" dia.

A1584-WN
Weathered
Nickel
3" c/c



A1585-ORB
Oil Rubbed
Bronze
1 1/4" dia.

A1584-ORB
Oil Rubbed
Bronze
3" c/c



A1585-WID
Wrought Iron
Dark
1 1/4" dia.

A1584-WID
Wrought Iron
Dark
3" c/c



AB3014-G10
Satin Nickel
1 1/4" dia.



A53005-G10
Satin Nickel
1 1/4" dia.

A53006-G10
Satin Nickel
3" c/c



A53005-ORB
Oil Rubbed
Bronze
1 1/4" dia.

A53006-ORB
Oil Rubbed
Bronze
3" c/c



A53005-FB
Flat Black
1 1/4" dia.

A53006-FB
Flat Black
3" c/c



D942-AE
Antique English
1 1/4" sq.



D527-AE
Antique English
1" x 3 1/4"
2 1/4" c/c



D529-AE
Antique English
3 3/4" x 2"
3" c/c



D942-ORB
Oil Rubbed
Bronze
1 1/4" sq.



D552-ORB
Oil Rubbed Bronze
1 1/4" x 4 1/2"
3" c/c



D553-ORB
Oil Rubbed Bronze
4 1/2" x 1 1/4"
3" c/c



D542-AC
Antique Copper
1 1/16" sq.



D552-AC
Antique Copper
1 1/4" x 4 1/2"
3" c/c



D553-AC
Antique Copper
4 1/2" x 1 1/4"
3" c/c



D522-BL
Black
1 1/4" sq.



D527-A
Satin Nickel
1" x 3 1/4"
2 1/4" c/c



D529-A
Satin Nickel
3 3/4" x 2"
3" c/c



K152-AE
Antique English
3" c/c



DF91-AE
Antique English
3" c/c



K47-B
Square Wood
Knob
1 1/4" sq.



K40-B
Round Wood
Knob
1 1/4" dia.



BBW8
Wood Pull



BBW9
Wood Pull



K49-B
Square Wood
Knob
1 1/4" sq.



K49-H
Square Wood
Handle

dimension **four** 4

authorized dealer:

